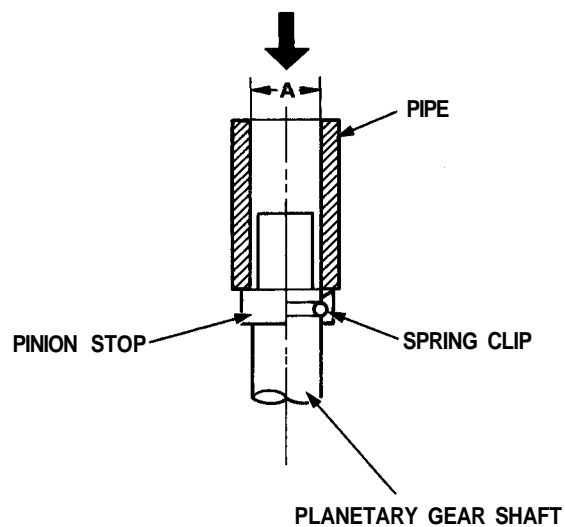




Overrunning Clutch Removal

1. Put the end of a pipe (inner diameter 13 mm (0.51 in)) against the pinion stop and strike the pipe to dismount the pinion stop from the spring clip.

A: 13 mm (0.51 in)



NOTE: Be careful not to damage the planetary gear shaft when striking the pipe.

2. Remove the spring clip then pull the pinion stop and overrunning clutch off the shaft.

